



Client and RTD Installation Instructions

This guide will show you how to install and set up:

1. The RIT Client
2. The RTD Links
3. The RTD update (throttle) interval in Excel

1. RIT User Application

The client software should be installed on all workstations accessing the instructor's workstation (or the server running the market).

Please follow the steps described below to install the RIT Client

Step 1

Go to <https://inside.rotman.utoronto.ca/financelab/rit-downloads/>

Under the "Download Instructions" – Step 1, click on the "Click here" box to download the RIT User Application.



Click here

To download RIT Market Simulator Client Application

Step 2

In the new page that has been opened, click on "Download RIT 2.0 Client"

Rotman School of Management
RIT 2.0 Client

Name: RIT 2.0 Client

Version: 1.1.8

Publisher: Rotman

Download RIT 2.0 Client

Step 3

Once you click on the “Download RIT 2.0 Client” button, you will notice that “click.application” file is downloaded. Depending on the web browser, it may ask you whether you want to keep downloading the file. If this is the case, click on “Keep” in order to successfully download the file. Once the file is downloaded, simply click on the file to proceed with installation.

Notes for instructors, the server and client can be installed on the same computer.

2. RTD Links

In addition to the RIT Client, the computer needs an MSI file installed (The RTD/API Data Link). This doesn’t automatically update, but it really won’t be changed frequently if ever. This registers some DLLs and allows for communication between RIT and Excel. You can download the RTD/API Data Link at the following link <https://inside.rotman.utoronto.ca/financelab/rit-downloads/>

Please note that there are 2 files, 32bit and 64bit, you need to install the file according to your Excel version. If you don’t know which version of Office you are using, please follow the instructions below:

In Office 2013

1. Open Excel.
2. Click **File > Account**.
3. Click on **About Excel**.



In Office 2010

1. Open Excel.
2. Click **File > Help**.
3. Under **About Microsoft Excel** the version is listed with the platform, similar to this:
Version: 14.0.0000.0000 (32-bit)

Please note that you can have a 32bit Office version even if your OS is 64bit and vice versa.

Please follow the steps described below to install the RTD Links

Step 1

Go to <https://inside.rotman.utoronto.ca/financelab/rit-downloads/>

Under the “Download Instructions” – Step 3, click on the correct version of the RTD Links depending on the version of Excel that you have on your PC.

Step 3

Download the RTD (Real-Time Data) Links
Date Updated: March 17, 2021 (version: 0.0.15)



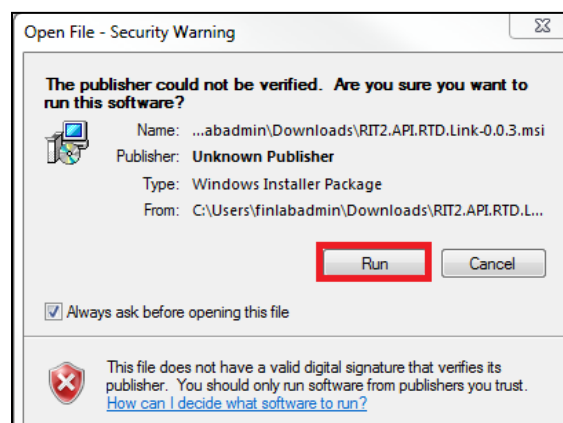
32-bit version of RTD links
Click Here



64-bit version of RTD links
Click Here

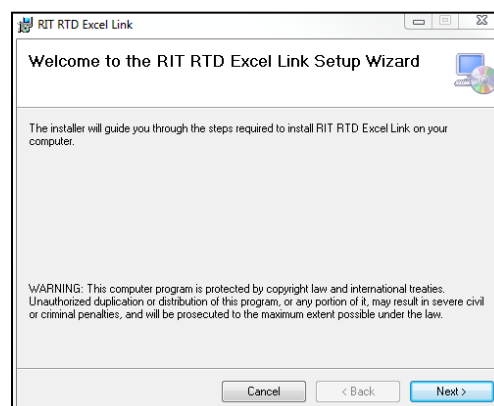
Step 2

Once you click on the link described in Step 1, you will download a file called “RIT2.API.RTD.Link”. Double click on it and then select “Run”



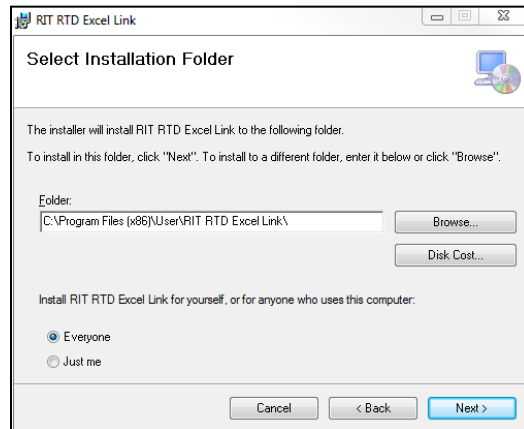
Step 3

On the following window, click on “Next”



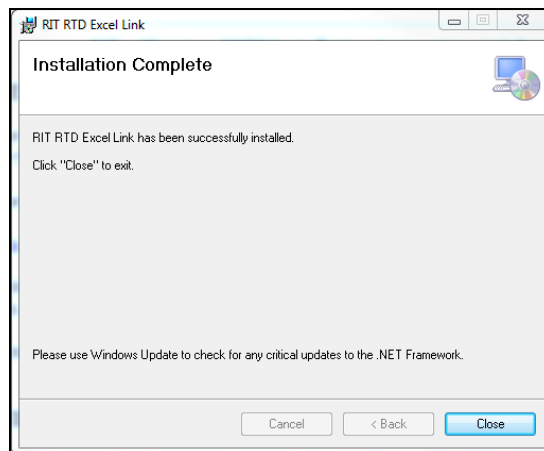
Step 4

Choose the folder where to install the RTD Links and then start the installation.



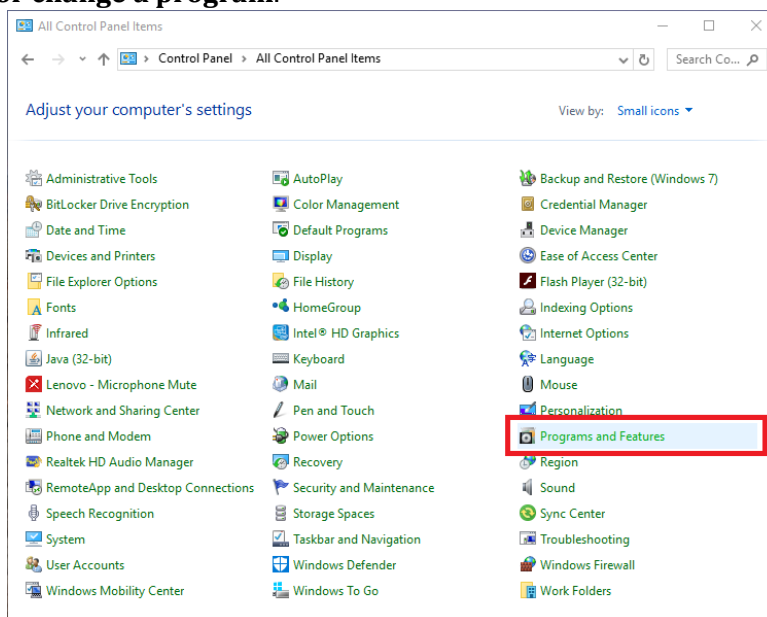
Step 5

Once the installation is complete, you will see the following window.

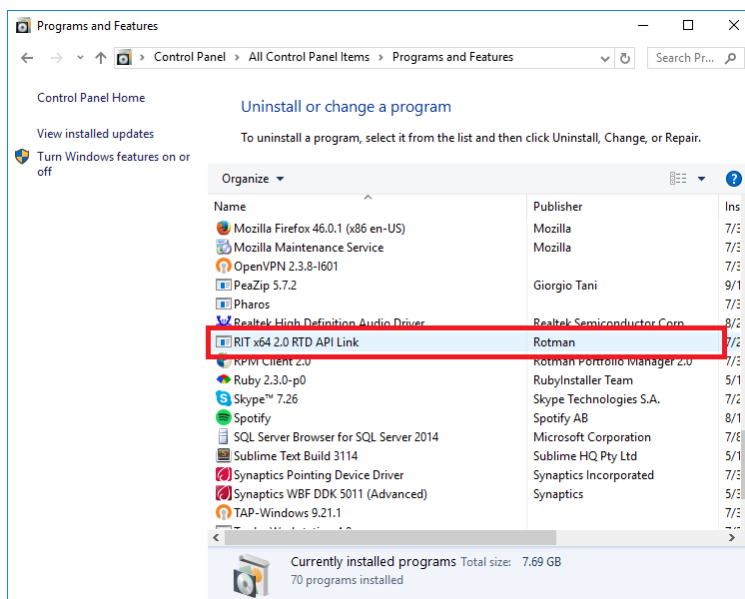


When installing a new version of the RIT Excel RTD/API Links, it is highly recommended that you uninstall any previous versions. In order to do so, please follow these steps:

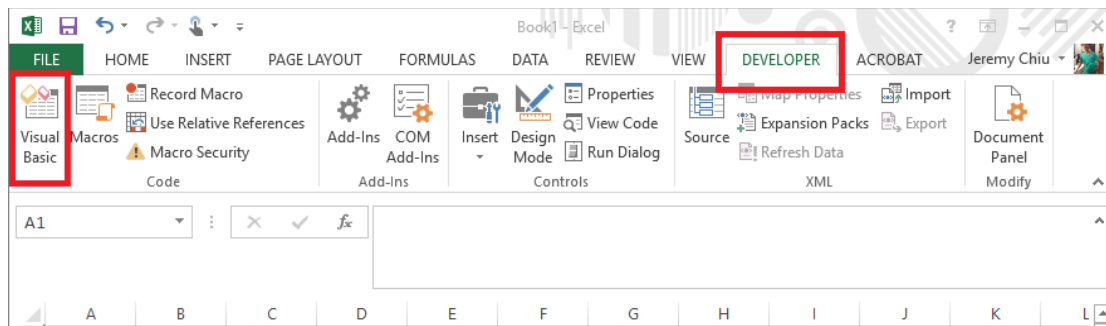
1. From the **Control Panel** in Windows, navigate to **Programs and Features** and choose **Uninstall or change a program**.



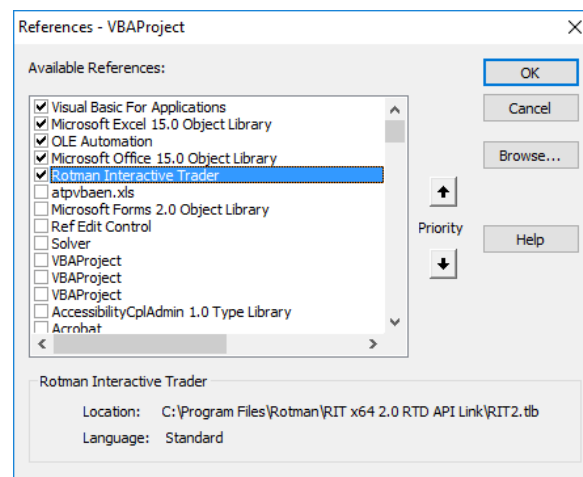
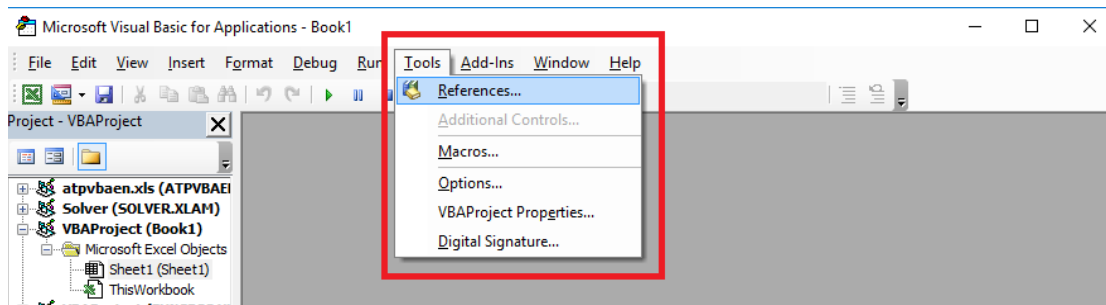
2. Find the program named **RIT 2.0 RTD API Link** or **RIT x64 RTD API Link** and choose **Uninstall**.



3. Follow the instructions to remove the old version of the Excel RTD/API Links.
4. Install the new version of the Excel RTD/API Links that you have downloaded from <https://inside.rotman.utoronto.ca/financelab/rit-downloads/>
5. After installing the new Excel RTD/API Links, open Excel and navigate to the **Developer** tab and open the **Visual Basic Editor**.



6. On the toolbar, choose **Tools > References** and ensure that **Rotman Interactive Trader** is checked off or add it by browsing to **C:\Program Files\Rotman** or **C:\Program Files (x86)\Rotman** as needed.



3. The RTD update (throttle) interval in Excel

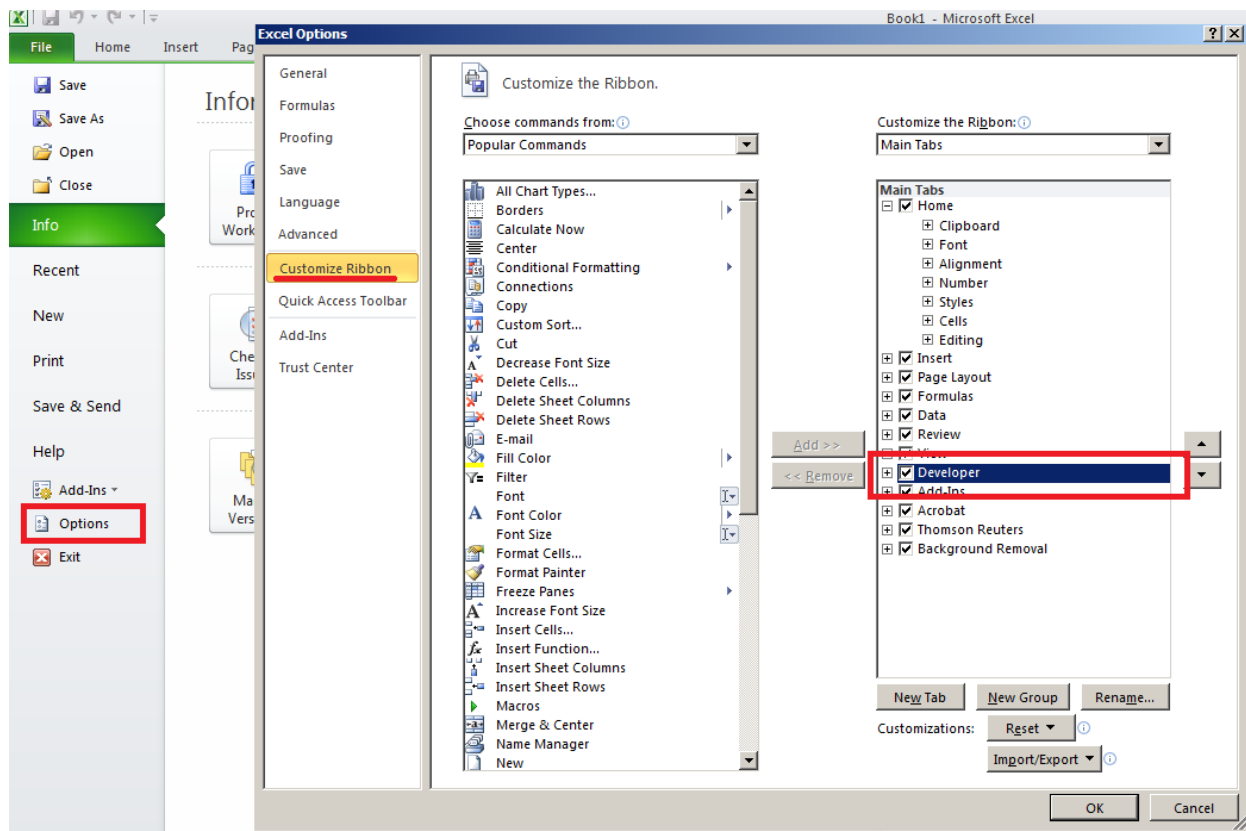
Once you install the RTD Links as instructed above, you may need to set up the RTD Throttle Interval which is the refresh rate of how often the RTD links are updated in your Excel. For example, if the interval is set to 1000, it means that the RTD links are updated every 1000 milliseconds (which is one second). By default, most Excel versions have it set at 2000 and we recommend setting it at 1000 for convenience and easy coding.

Please note that your instructor may have a separate recommendation for the value depending on the type of class, and also note that making it too low (closer or equal to zero) may result in your system crash or failure as Excel will continuously update values and run calculations.

In order to set the RTD Throttle Interval, you'll need to follow the instructions below.

Step 1

Open your Excel and click Developer – Visual Basic. If you do not have the Developer tab available in your Excel, first ensure that it is turned on by clicking on “File” on the top-left corner of the screen, then click on “Options”. Once the “Excel Options” window is opened, choose “Customize Ribbon” on the left menu bar, and ensure that “Developer” on the right side is checked. Once this is checked, the Developer Tab will appear in the original list of Excel tabs as shown below.



You can access the VBA editor by clicking on the “Visual Basic” icon within the Developer tab.

Hint: You can access this at anytime with the shortcut Alt+F11

Step 2

As shown in the screenshot below, click (1) View and choose (2) Immediate Window. You'll see a blank window displayed at the bottom.

In this window, you can type the following command (3) in order to query the current RTD refresh rate. As mentioned earlier, this value is usually set to 2000 by Microsoft.

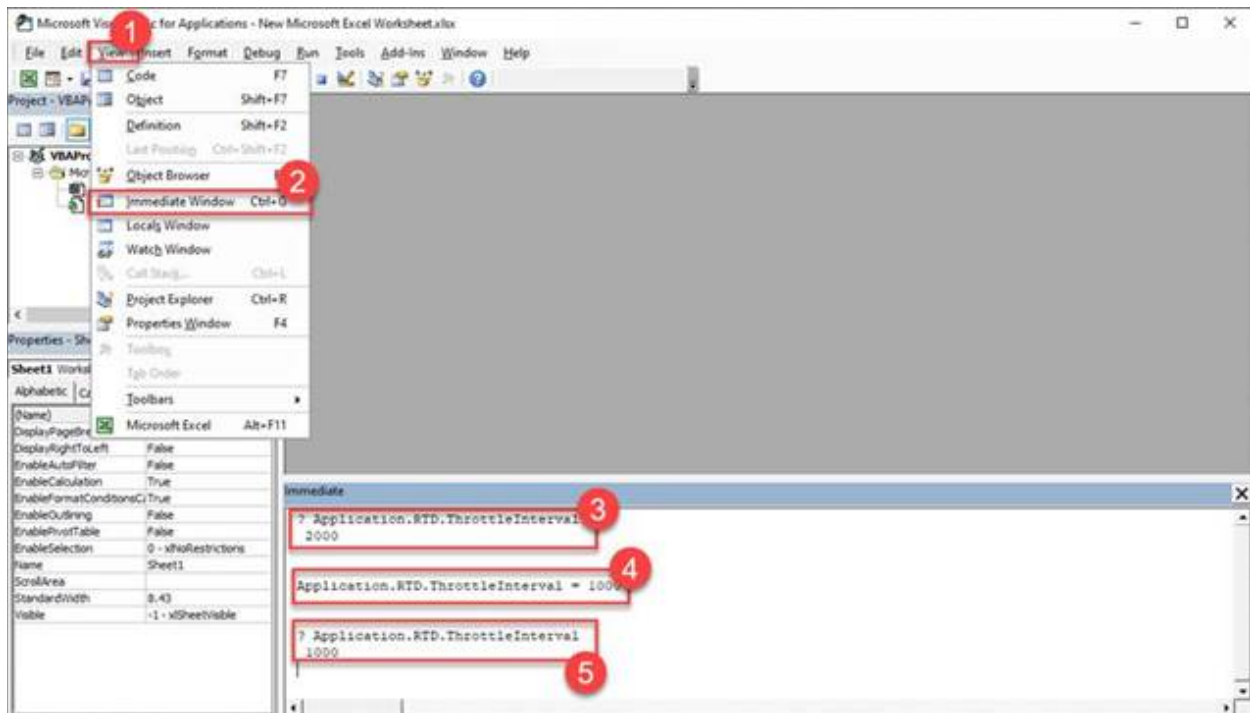
```
? Application.RTD.ThrottleInterval
```

Once you hit enter, you'll see that the value is displayed below the command.

In order to change this value, simply type in the following command (4). In this case, we're setting the value to 1000 (millisecond) which corresponds to one second.

```
Application.RTD.ThrottleInterval = 1000
```

You may query the (3) command again to check this as shown in the screenshot below (5).



You are now ready to use the Rotman Interactive Trader and link real-time data in Excel!