



RIT User Application and RTD Installation Instructions

This guide will show you how to install and set up:

1. The RIT User Application (referred to below as the RIT Client)
2. The RTD Links
3. Referencing RIT in VBA
4. The RTD update (throttle) interval in Excel

1. **RIT User Application**

This client software should be installed on all workstations accessing the instructor's workstation (or the server running the market).

Please follow the steps described below to install the RIT Client

Step 1

Go to <https://inside.rotman.utoronto.ca/financelab/rit-downloads/>

Under the "Download Instructions" – Step 1, click on the "RIT Market Simulator User Application" link to download the RIT User Application.

Step 2

Once the file is downloaded, simply click on the file to proceed with installation.

Note for instructors:

the Instructor Application and User Application can be installed on the same computer.

2. **RTD Links**

In addition to the RIT Client, the computer requires the installation of an MSI file (RIT2.RTD.API.Link). This file doesn't update automatically, but it is unlikely to change frequently, if at all. The installation registers some DLLs and enables communication between RIT and Excel.

Please note that there are two versions available: 32-bit and 64-bit. You need to install the file that matches your version of Excel. You can follow the instructions below to check your Excel version.

In Office 2013

1. Open Excel.
2. Click **File > Account**.
3. Click on **About Excel**.

Product Information



Product Activated

Microsoft Office Professional Plus 2013

This product contains



Change Product Key



About Excel

Learn more about Excel, Support, Product ID, and Copyright information.

In Office 2010

1. Open Excel.
2. Click **File > Help**.
3. Under **About Microsoft Excel** the version is listed with the platform, similar to this:
Version: 14.0.0000.0000 (32-bit)

Please note that you can have a 32bit Office version even if your OS is 64bit and vice versa.

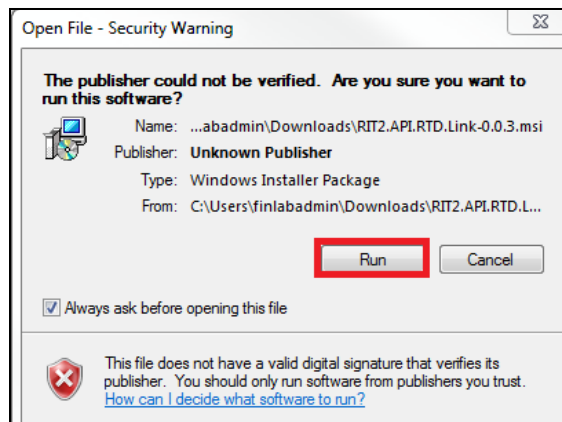
Please follow the steps described below to install the RTD Links

Step 1

Visit [this link](#). Under the “Download Instructions,” go to Step 3 and click on “RTD (Real-Time Data) Links” to download the correct version of the RTD Links file.

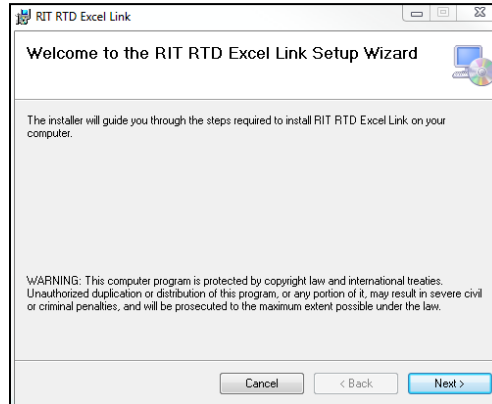
Step 2

Once you download the correct file, double click on it and then select “Run”:



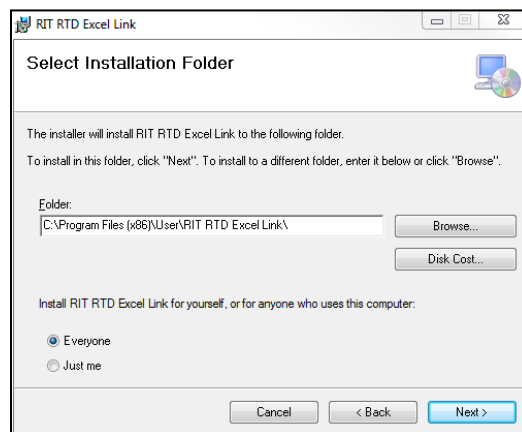
Step 3

On the following window, click on "Next":



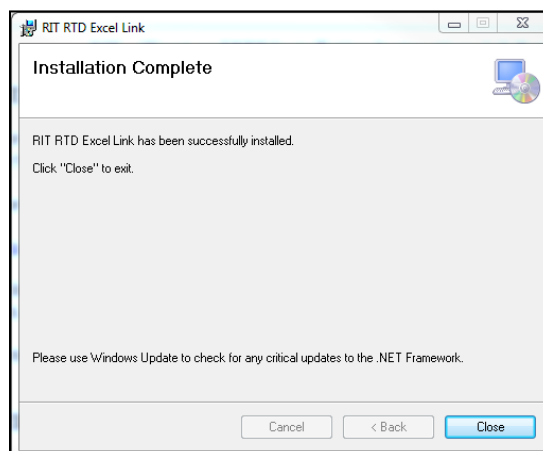
Step 4

Choose the folder where to install the RTD Links and then start the installation.



Step 5

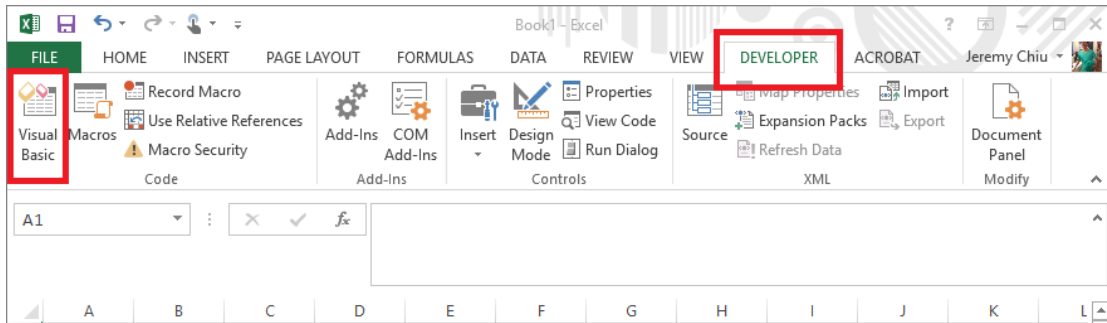
Once the installation is complete, you will see the following window.



3. Referencing RIT in VBA

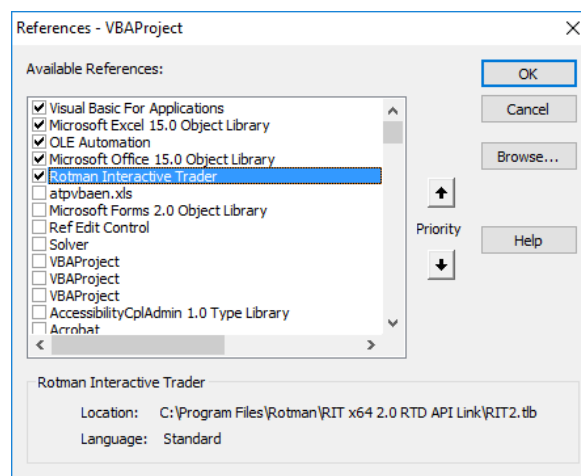
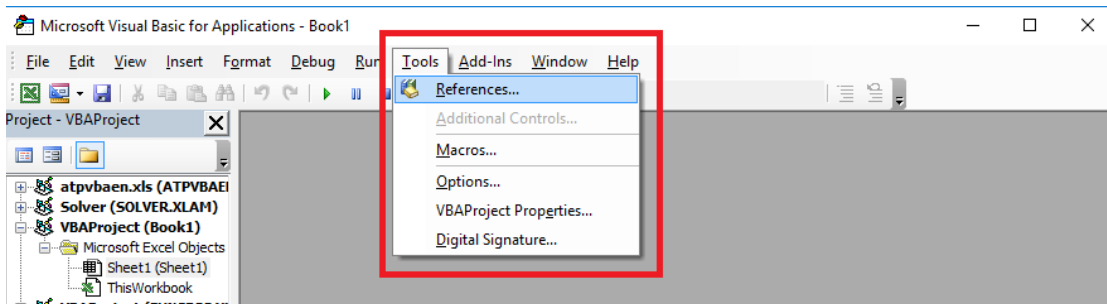
Step 1

After installing the new Excel RTD.API Links, open Excel and navigate to the **Developer** tab and open the **Visual Basic Editor**.



Step 2

On the toolbar, choose **Tools > References** and ensure that **Rotman Interactive Trader** is checked off or add it by browsing to **C:\Program Files\Rotman** or **C:\Program Files (x86)\Rotman** as needed.



4. The RTD update (throttle) interval in Excel

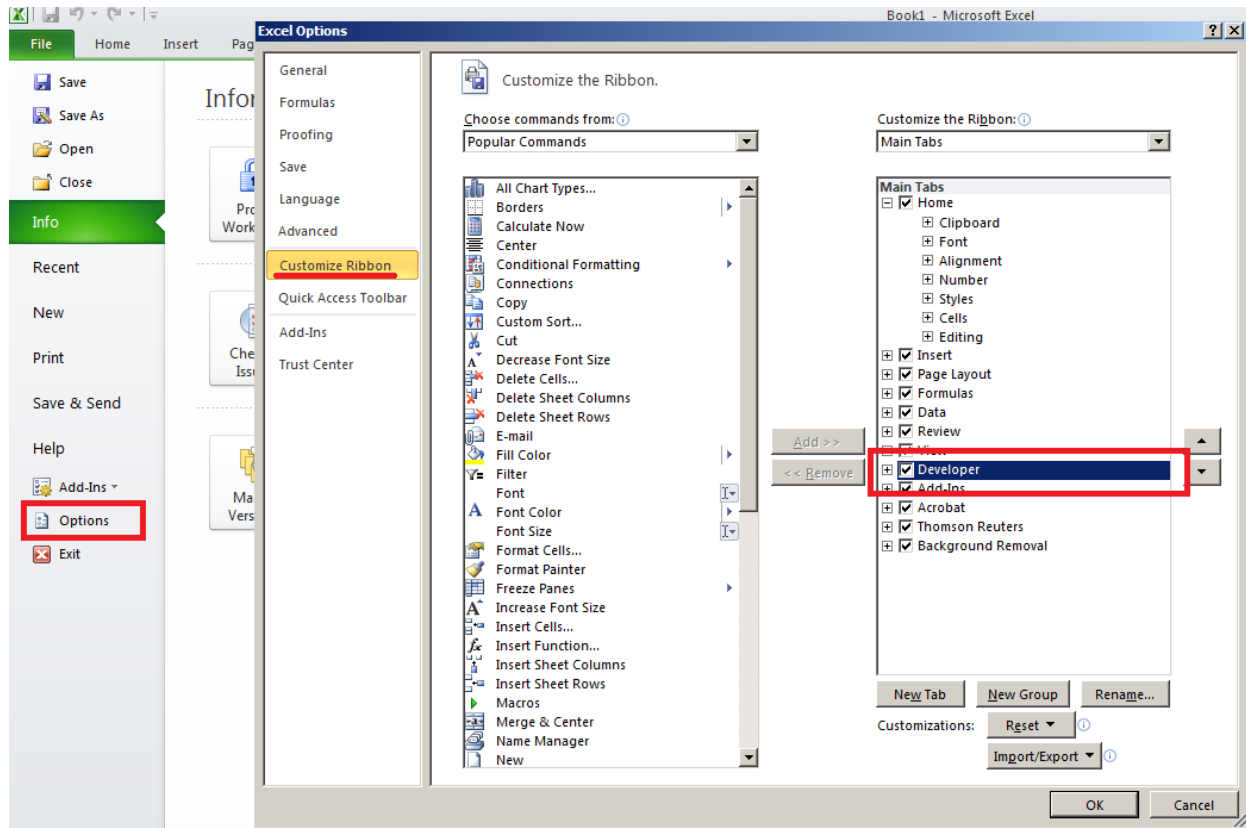
Once you install the RTD Links as instructed above, you may need to set up the RTD Throttle Interval which is the refresh rate of how often the RTD links are updated in your Excel. For example, if the interval is set to 1000, it means that the RTD links are updated every 1000 milliseconds (which is one second). By default, most Excel versions have it set at 2000 and we recommend setting it at 1000 for convenience and easy coding.

Please note that your instructor may have a separate recommendation for the value depending on the type of class, and also note that making it too low (closer or equal to zero) may result in your system crash or failure as Excel will continuously update values and run calculations.

In order to set the RTD Throttle Interval, you'll need to follow the instructions below.

Step 1

Open your Excel and click Developer – Visual Basic. If you do not have the Developer tab available in your Excel, first ensure that it is turned on by clicking on “File” on the top-left corner of the screen, then click on “Options”. Once the “Excel Options” window is opened, choose “Customize Ribbon” on the left menu bar, and ensure that “Developer” on the right side is checked. Once this is checked, the Developer Tab will appear in the original list of Excel tabs as shown below.



You can access the VBA editor by clicking on the “Visual Basic” icon within the Developer tab.

Hint: You can access this at any time with the shortcut Alt+F11

Step 2

As shown in the screenshot below, click (1) View and choose (2) Immediate Window. You'll see a blank window displayed at the bottom.

In this window, you can type the following command (3) in order to query the current RTD refresh rate. As mentioned earlier, this value is usually set to 2000 by Microsoft.

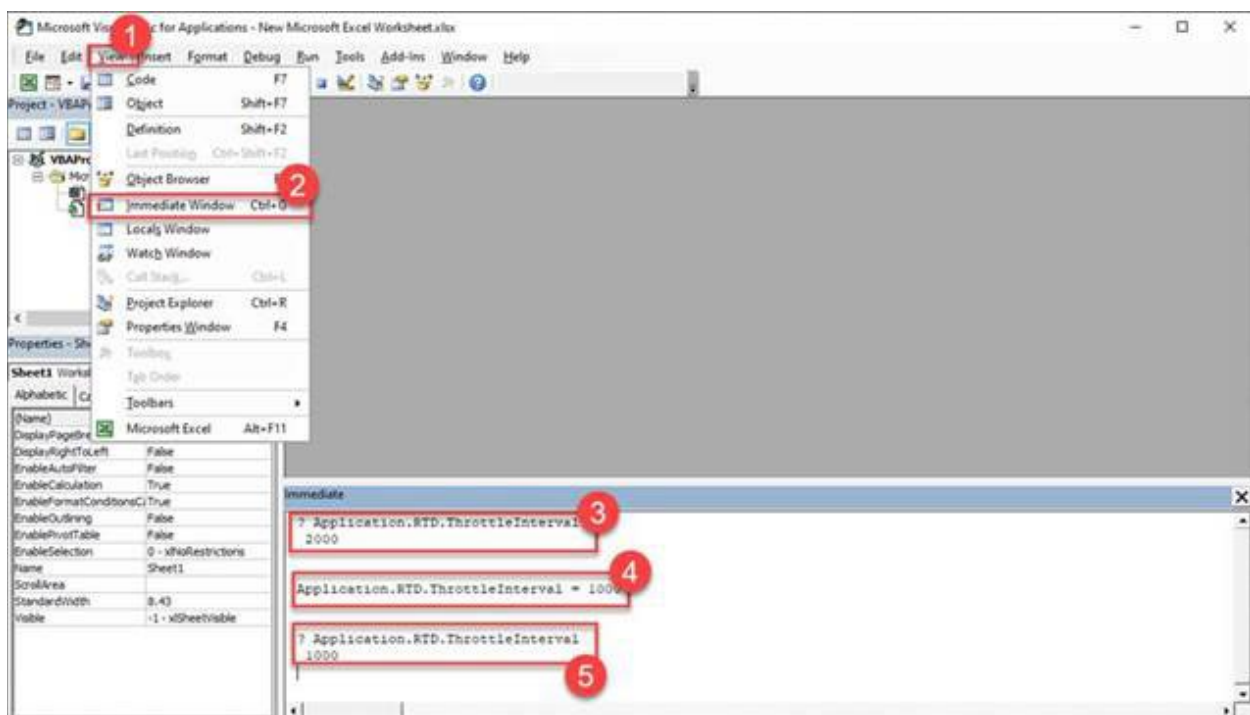
```
? Application.RTD.ThrottleInterval
```

Once you hit enter, you'll see that the value is displayed below the command.

In order to change this value, simply type in the following command (4). In this case, we're setting the value to 1000 (millisecond) which corresponds to one second.

```
Application.RTD.ThrottleInterval = 1000
```

You may query the (3) command again to check this as shown in the screenshot below (5).



You are now ready to use the Rotman Interactive Trader and link real-time data in Excel!