



Rotman School of Management  
UNIVERSITY OF TORONTO



# IMPACT CONSULTING GROUP

## About Us

Impact Consulting Group, originally formed in 1972, is an MBA student-led management consulting firm based out of the Rotman School of Management at the University of Toronto. We provide clients with innovative and high-quality tailored solutions to solve their top of mind business problems.

## Our Offering

We offer premium consulting services at competitive rates to create value and impact for clients. We understand each business problem is unique, and we are here to provide personalized solutions tailored to clients' specific needs. Our services include, but not limited to:



Strategy

- Strategic Planning
- Scenario Modelling & Analysis
- ESG Strategies



Operation

- Change Management
- Employee Engagement
- Process Mapping & Controls



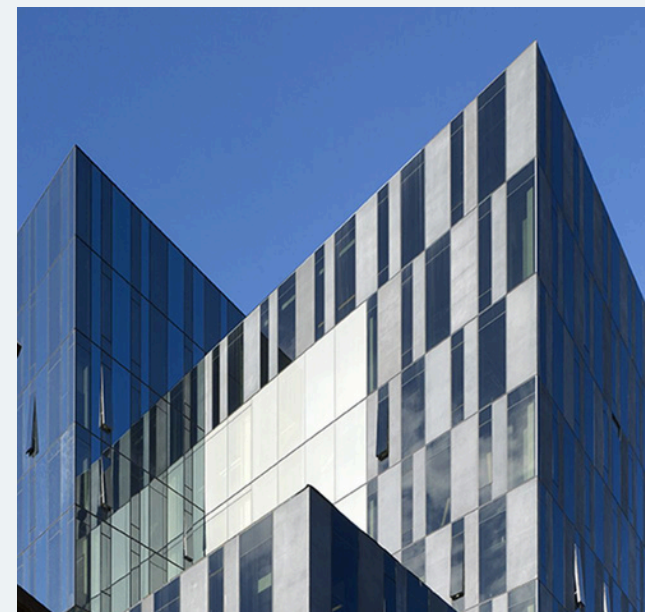
Marketing

- Market Sizing
- Pricing Strategy
- Competitor Analysis
- Customer Surveys & Insights



Digital

- Digital Strategy & Planning
- Human-Centric UX & Design
- Data Analytics



## Aspiration

**To be a uniquely personal consulting firm supporting organizations to overcome challenges and unleash their full potential**

## Past Clients







## How we create value

- Leveraging world-renowned business minds and resources at the University of Toronto
- Harnessing our Board of Advisors' 150 years of combined executive experience
- Utilizing MBA students' academic training & 30 years of combined industry experience
- Unleashing creativity and innovation through diverse thoughts
- Delivering customized solutions to address clients' challenges and opportunities
- Providing agile consulting services to ensure timely and effective support
- Maintaining lean organizational structure to maximize cost-effectiveness for our clients

>50

Years of History

100+

Businesses Transformed

<3

Months of Average Engagement

## Contact Us



+1 437-8293707



[impact@rotman.utoronto.ca](mailto:impact@rotman.utoronto.ca)



[www.ImpactConsultingGroup.ca](http://www.ImpactConsultingGroup.ca)



105 St. George Street, Suite 3092  
Toronto, Ontario M5S 3E6



## Our Team

Our team of four exceptional MBA students from diverse backgrounds brings a wealth of expertise and a strong dedication to serve our clients:

### Industry:

- Healthcare
- Investment
- Infrastructure
- Manufacturing
- Media
- Nonprofit

### Education:

- Engineering
- Finance
- Marketing
- Pharmacy
- Strategy
- Sustainability

*"The Impact team at Rotman, informed by state-of-the-art research and the enduring fundamentals of management thinking, delivers innovative, pragmatic and actionable solutions. I am a regular customer myself. The professionalism, the value added, and the can-do-attitude keep me coming back"*

*-Tiff Macklem,*

*Former Rotman Dean*